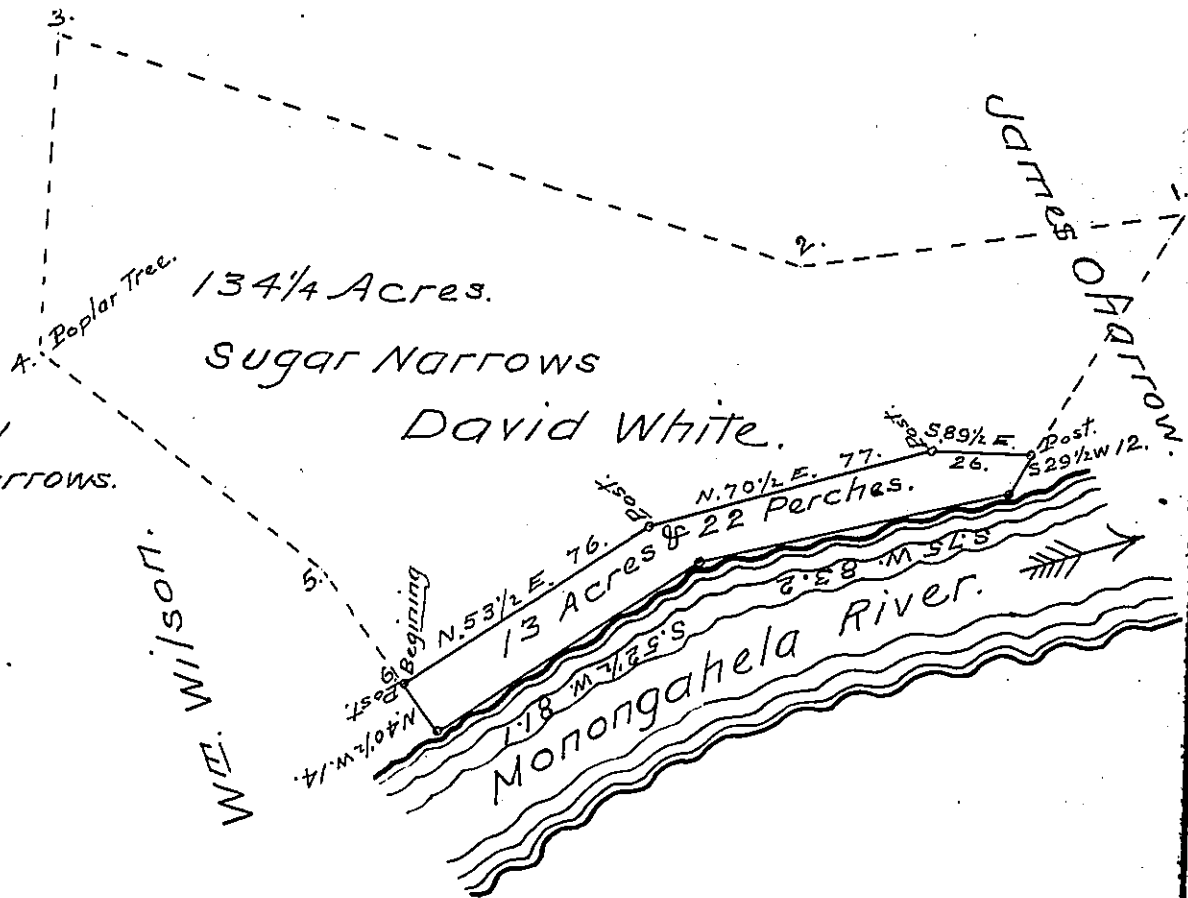


Present courses and distances of Sugar Narrows.

- 1-S. 78 1/2 W. 102.00
- 2-N. 76 1/2 W. 200.88
- 3-SOUTH 80.60
- 4-S. 55 1/2 E. 92.00
- 5-S. 40 1/2 E. 37.00
- 6-N. 53 1/2 E. 76.00
- 7-N. 70 1/2 E. 77.00
- 8-S. 89 1/2 E. 26.00
- 9-N. 29° E. 74.40

Original courses and distances of Sugar Narrows.

- 1-S. 78° W. 102.
- 2-N. 77° W. 190.
- 3-SOUTH 78.
- 4-S. 56° E. 92.
- 5-S. 41° E. 37.
- 6-N. 53° E. 76.
- 7-N. 70° E. 77.
- 8-EAST 16.
- 9-N. 29° E. 73.



The above, is a Draught of a Small Tract of Land Situate on the West Side of the Monongahela River in Carrol Township Washington County Containing Thirteen acres and Twenty two Perches and allowance of six per cent. Surveyed February 4, 1865, In pursuance of a Warrant Granted to Noah Grant for 20 acres of Land, Dated January the 30th 1865, by

Francis Reader D.S.

as^{td} by Brisben Wall.

To the Hon.

James - Barr Esqr.

Surveyor General of Penna.

IN TESTIMONY that the above is a copy of the original remaining on file in the Department of Internal Affairs of Pennsylvania, made conformably to an Act of Assembly approved the 16th day of February, 1833, I have hereunto set my Hand and caused the Seal of said Department to be affixed at Harrisburg, this seventeenth day of January 1905.

Lucas N. Brown
Secretary of Internal Affairs.